



HO HSING



ホーシンブローア

REGENERATIVE / SIDE CHANNEL RING BLOWER



證明書 CERTIFICATE



WE HEREBY CERTIFY THAT:
 Certificate No.: R10081601E
 H.S. Machinery Co., Ltd.
 No. 5, Lane 632, Chung Cheng Rd., Shulin City 238, Taipei Hsien, Taiwan.
 Side Channel Ring Compressor
 RB20
 RB30, RB40, RB50, RB60, RB80, RB30-1, RB40-1, RB50-1, RB60-1, RB60-4

CE

AND KEEPS ALL REQUIREMENTS ACCORDING TO THE FOLLOWING REGULATIONS

Test Standards:
 EN 61000-6-4:2007 IEC61000-3-2:2005 + A1:2008 + A2:2009
 IEC61000-3-3:2008
 EN 61000-6-2:2005 IEC61000-4-2:2008 IEC61000-4-3:2008 + A1:2007
 IEC61000-4-4:2004 IEC61000-4-5:2005
 IEC61000-4-6:2008 IEC61000-4-8:1993 + A1:2000
 IEC61000-4-11:2004

IS IN COMPLIANCE WITH THE EUROPEAN COUNCIL DIRECTIVE 2004/10/EC WITHIN CE MARKING REQUIREMENT.

Name of Laboratory: Matrix Test Laboratory
 Site Location: 2F, No.146, Jian Yi Rd., Chung-Ho City, Taipei Hsien, Taiwan, R.O.C.
 Issue Date: Aug. 27, 2010
 Approved by: *Peter Chen* / Managing Director

This certification shall not be reproduced without the written approval of the laboratory.
 The certification is valid only in accordance with the test report No. R10081601E. The confirmation is valid only if the product is manufactured in accordance with the test report.

CSA INTERNATIONAL

Certificate of Compliance

Certificate: 1061705 Master Contract: 170573 (LR 41001)
 Project: 138420 Date Issued: March 21, 2003

PART B - Three Phase

Model No	Volts	Amps		Max. Pressure (psi)	
		50 Hz	60 Hz	50 Hz	60 Hz
RR20-53U	208-240/416-480	1.4/0.7	1.2/0.6	0.85	1.3
-56U	208-240	1.4	1.2	"	"
-57U	416-480	0.7	0.6	"	"
RB30-53U	208-240/416-480	2.3/1.2	2/1	1.4	1.9
-56U	208-240	2.3	2	"	"
-57U	416-480	1.15	1	"	"
RB40-43U	208-240/416-480	5.9/2.95	4/2	2.03	1.96
-46U	208-240	5.9	4	"	"
-47U	416-480	2.95	2	"	"
-53U	208-240/416-480	4.7/2.4	4.8/2.4	2.6	2.6
-56U	208-240	4.7	4.8	"	"
-57U	416-480	2.4	2.4	"	"
-63U	208-240/416-480	6/3	5.8/2.9	2.9	3.33
-66U	208-240	6	5.8	"	"
-67U	416-480	3	2.9	"	"
RB60-53U	208-240/416-480	6/0.3	5.4/2.7	2.4	2.3
-56U	208-240	6	5.4	"	"
-57U	416-480	3	2.7	"	"
-61U	208-240/416-480	9/4.5	9/24.6	3.92	3.92
-66U	208-240	9	9.2	"	"
-67U	416-480	4.5	4.6	"	"
RB80-53U	208-240/416-480	9/4.5	9/4.5	3	2.9
-56U	208-240	9	9	"	"
-57U	416-480	4.5	4.5	"	"
-63U	208-240/416-480	10.5/5.2	10.5/5.2	3.3	3.3
-66U	208-240	10.5	10.5	"	"
-67U	416-480	5.2	5.2	"	"
-73U	208-240/416-480	11.6/5.8	16/8	4.35	4.78
-76U	208-240	11.6	16	"	"
-77U	416-480	5.8	8	"	"

Notes:
 1. Certified as components of various electrical equipment where the suitability of combination will be determined in the final application.
 2. The motors have protection systems that are dependent upon external circuitry. Therefore, the ability of the protection systems to suitably protect the motors were not evaluated in this application and shall be evaluated in the end products where the complete protection circuitry is in place.

APPLICABLE REQUIREMENTS
 CSA Std C22.2 No. 68-1992 - Motor-Operated Appliances
 UL Std. No. 73 - Motor-Operated Appliances

CSA INTERNATIONAL

Certificate of Compliance

Certificate: 1061705 Master Contract: 170573 (LR 41001)
 Project: 138420 Date Issued: March 21, 2003

Issued to:

The products listed below are eligible to bear the CSA Mark shown, with adjacent indicator "C" and "US".

SP
 C US

Authorized by: *James Hong*
 Director, Far East Operation

PRODUCTS
 CLASS 9091 01 - MISCELLANEOUS
 CLASS 9091 81 - MISCELLANEOUS - Certified to US Standards

Ring compressors/blower or vacuum fans, 50/ 60 Hz, for use in miscellaneous commercial applications.

PART A - Single Phase

Model No	Volts	Amps		Max. Pressure (psi)	
		50 Hz	60 Hz	50 Hz	60 Hz
RR20-51U	108-120/ 216-240	2.4/ 1.2	3.2/ 1.6	1	1.3
-54U	108-120	2.4	3	"	"
-55U	216-240	1.2	1.6	"	"
RB30-51U	108-120/ 216-240	3.4/ 1.7	4.5/ 2.3	1.28	1.5
-54U	108-120	3.4	4.5	"	"
-55U	216-240	1.7	2.3	"	"
RB40-51U	108-120/ 216-240	12/ 6	10.7/ 5.3	2.0	2.3
-54U	108-120	12	10.7	"	"
-55U	216-240	6	5.3	"	"
-61U	108-120/ 216-240	14.5/ 7.25	16.6/ 8.3	2.76	2.61
-64U	108-120	14.5	16.6	2.76	2.61
-63U	216-240	7.25	8.3	2.76	2.61
RB50-51U	108-120/ 216-240	20/ 10	20/ 10	2.1	2.4
-54U	108-120	20	20	"	"
-55U	216-240	10	10	"	"

The "C" and "US" indicators adjacent to the CSA Mark signify that the product has been evaluated to the applicable CSA and ANSI/UL Standards, for use in Canada and the U.S., respectively. This "SP" indicator indicates products eligible to bear the "SP" indicator. NRTL, i.e. National Recognized Testing Laboratory, is a designation granted by the U.S. Occupational Safety and Health Administration (OSHA) to laboratories which have been recognized to perform certification in U.S. Standards.

増圧

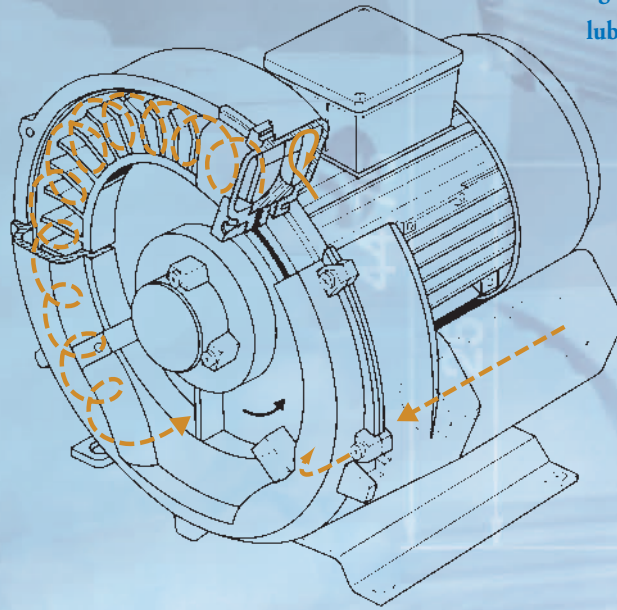
作動原理と主な用途例

吸い込む空気は螺旋軌道を描きながら圧縮室を通り、インペラの遠心推力により繰り返し加速されます。

その結果、排気スロットで高圧が得られます。

モータ軸に直に装着されたインペラは、ケーシングと完全に無接触ですので、潤滑油が不要で圧差も一定です。

主な用途例は、
空気搬送装置、繊維機械、印刷機械、基板回路製造、集塵装置、養殖関係、スパ関係、歯科関係、紙工関係、包装機械等



O perating Principle and Application

The aspirated gas flows through the compression chamber along a helical trajectory and is repeatedly accelerated by the centrifugal thrust of the impeller.

Consequently, higher pressure will be obtained at the discharge slot.

The impeller mounted directly on the motor shaft is rotating smoothly without friction and thus no lubrication is necessary. The pressure difference of course remains steady.

The Side Channel Blowers are widely used on : Pneumatic conveying systems / Textile machines / Printing machines / PCB process / Dust collection / Fish ponds / SPA / Dental suction devices / Paper sorting and delivery / Lifting and holding / Packaging machines

品質

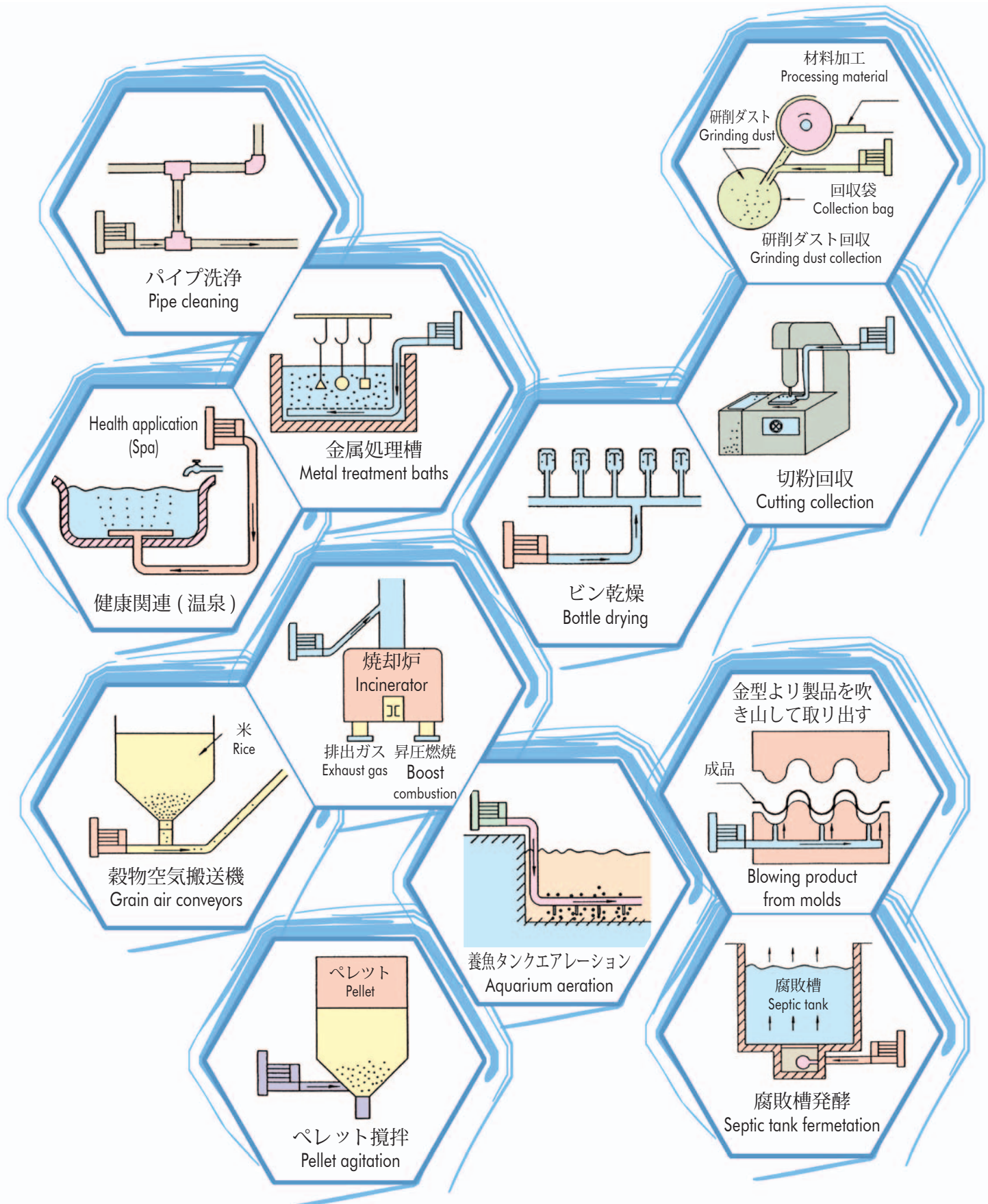
特長と利点

- ケーシング(RB80を除外)及びインペラはアルミダイキャストで、機械的強度、耐久性、軽量、そして滑らかな外部表面など、数々の特長を有しています。
- RBシリーズのホーシンプローアは、欧州RoHS指令、CEマーキング標準対応です。また、CSA品も特注品でご用意できます。
- 国際レベルの保護等級IP54 (モータ部)。IP55の特注品もご用意できます
- 絶縁等級F種 (モータ部)
- 異電圧対応: 標準機で異電圧対応
- あらゆる方向での設置ができます(RB20・30を除外)

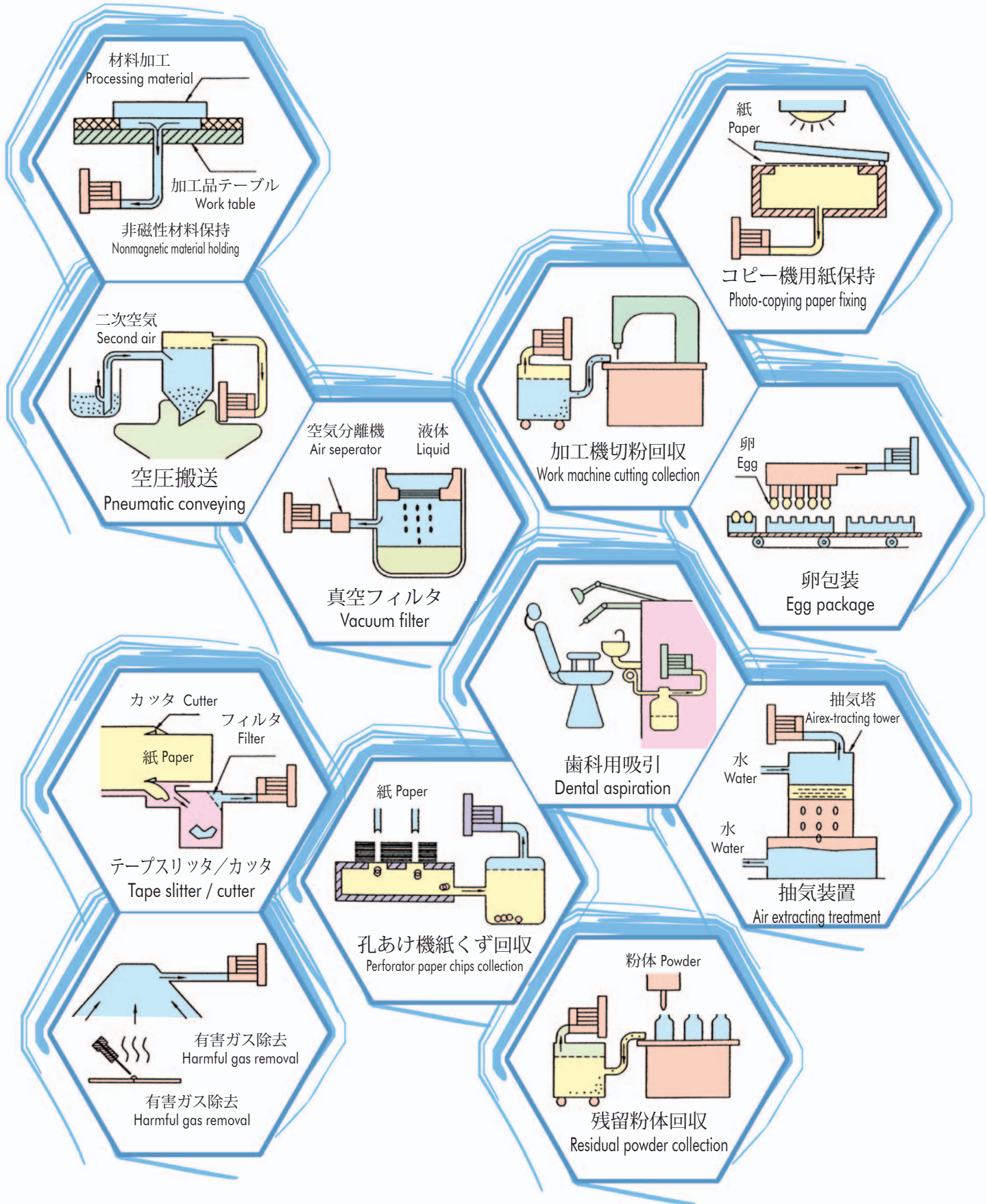
F eatures and Advantages

- Casing (except RB80) and impellers are made of aluminum alloy and have excellent features on mechanic strength、durability、light weight and smooth exterior.
- RB series Side Channel Blowers are designed to comply with the safety requirements of IEC / CSA and have attained their Type Approval.
- Meet CE Norm :89/336 , 73/23 , EN60204-1, EN50081-2 , EN50082-2.
- Degree of protection : IP54 / IP55
- Insulation class: F (155°C)
- Voltage range : 1 Phase, 100-120 / 200-240 VOLT
1 Phase, 108-120 / 216-240 CSA
3 Phase, 200-240 / 380-440 VOLT
3 Phase, 208-240 / 416-480 VOLT CSA
- Frequency : 50 / 60 Hz
- Installation : Any aspect. (except RB20,30)

吐出（正圧）用途例



吸引（負圧）用途例



吐出特性 / (50 Hz) / Blowers with 50 Hz

相 (Phase)	電圧 (Voltage)	型式 (Model)	Hz	定格出力 (kW) Rated Output KW	定格電流 (Amps) Rated Current Amps	最大圧力 (Kpa) Max. Pressure Kpa	最大風量 (m³/min) Max. Airflow/m³/min	騒音 dB(A)* Noise Level dB (A)
単相 Single	100-120 / 200-240	RB20-510	50	0.22	2.2-2.3 / 1.15-1.18	+6.5	0.9	64
		RB30-510		0.38	3.7-3.6 / 1.81-1.79	+8.5	1.3	69
		RB40-510		0.8	11.5-12.5 / 5.8-6.4	+15.0	2.4	69
		RB40-510-9		0.8	11.7-11.9 / 5.74-6.4	+14.5	2.4	69
		RB40-610		1.1	15-14.6 / 7.5-7.4	+19.0	2.4	69
		RB50-510		1.5	20-17.7 / 9.5-8.9	+16.0	3.5	72
三相 Three Δ-Y	200-240	RB10-520	50	0.2	0.81-0.95	+9.5	0.7	50
		RB20-520		0.22	0.75-0.84 / 0.44-0.51	+6.5	0.9	64
	RB30-520	0.38		1.72-2.41 / 1.1-1.56	+9.5	1.3	69	
	RB40-420	0.76		3.6-4.85 / 2.2-3.23	+14.0	2.4	69	
	RB40-420-9	0.76		3.53-4.74 / 2.15-3.2	+15.5	2.4	69	
	RB40-420-F	0.76		2.98-4.67 / 1.92-3	+10.0	2.4	69	
	RB40-520	0.9		4.3-4.8 / 2.53-3.25	+18.0	2.4	69	
	RB40-620	1.1		4.8-5.53 / 2.8-3.7	+20.0	2.4	69	
	RB50-520	1.5		7.44-8.76 / 4.36-6	+22.0	3.5	72	
	RB50-520-9	1.5		5.87-8.46 / 3.69-5.97	+17.0	3.5	72	
	RB50-520-F	1.5		5.57-8.38 / 3.68-5.98	+15.0	3.5	72	
	RB50-620	2.2		8.67-9.45 / 4.95-6.24	+27.0	3.5	72	
	RB60-520	2.2		10.8-10.9 / 5.8-6.7	+22.0	5.1	76	
	RB60-520-9	2.2		9-9.9 / 5.3-6.3	+20.0	5.1	76	
	RB60-620	3		13.1-13.6 / 7.3-8.5	+28.0	5.1	76	
	RB60-720	4		14.7-14.8 / 8.2-9	+34.0	5.1	76	
	200	RB60-3-7NO-F		3.3	11.1	+20.5	5.7	76
	200-240 / 345-416	RB80-4B0		4	17.3-16.5 / 10-9.3	+23.0	8.5	73
		RB80-4B0-Z		4	19.1-17.5 / 11-9.92	+23.0	8.5	76
		RB80-5B0		5.5	21.8-21.7 / 12.6-12.3	+30.0	8.5	73
		RB80-5B0-9		5.5	19.7-20.5 / 11.4-11.6	+28.0	8.5	73
RB80-5B0-Z		5.5	23.2-22.5 / 13.3-12.9	+30.0	8.5	76		
RB80-6B0		7.5	28.1-30.9 / 16-17.4	+40.0	8.5	73		
RB80-6B0-Z	7.5	30.1-32.1 / 17.1-18.2	+40.0	8.5	76			

吸込特性 / (50 Hz) / Vacuum with 50 Hz

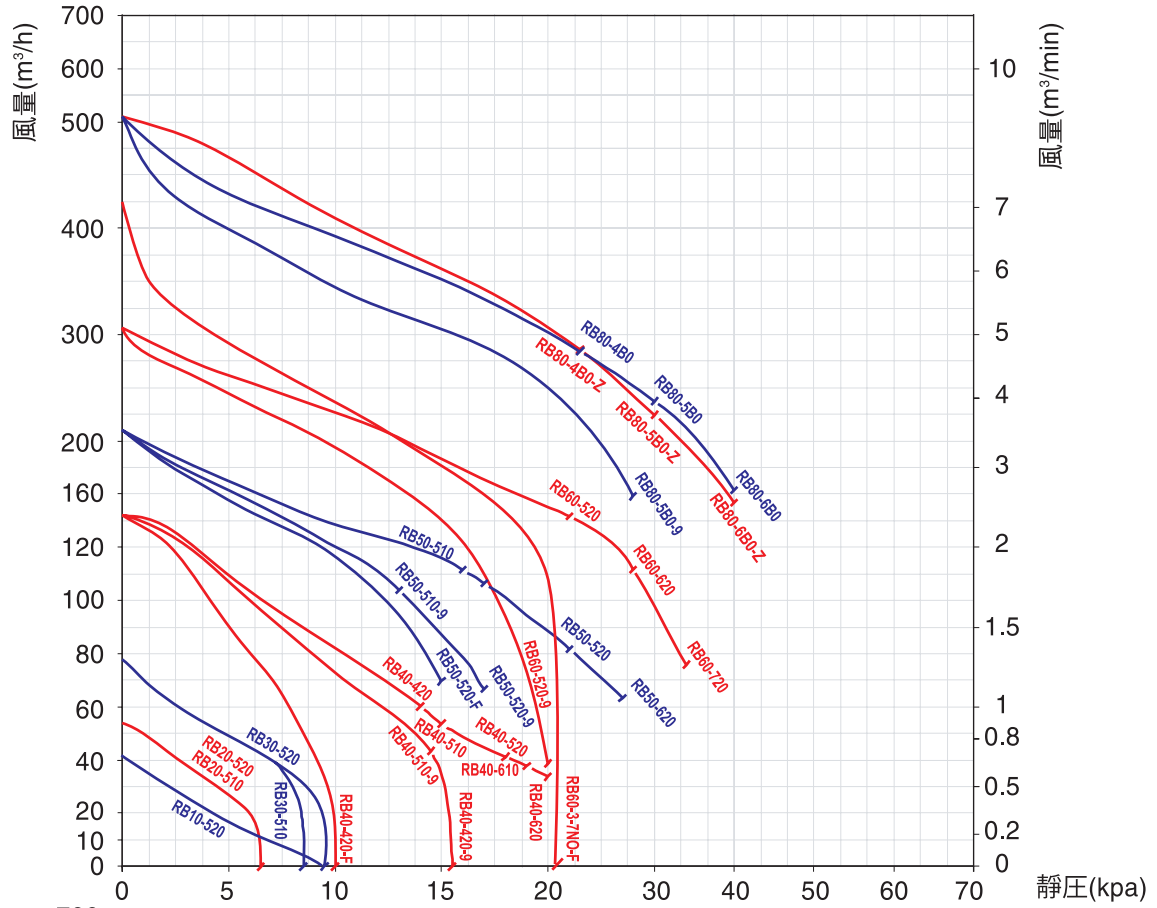
相 (Phase)	電圧 (Voltage)	型式 (Model)	Hz	定格出力 (kW) Rated Output KW	定格電流 (Amps) Rated Current Amps	最大圧力 (Kpa) Max. Pressure Kpa	最大風量 (m³/min) Max. Airflow/m³/min	騒音 dB(A)* Noise Level dB (A)
単相 Single	100-120 / 200-240	RB20-510	50	0.22	2.19-2.27 / 1.13-1.17	-5.5	0.9	64
		RB30-510		0.38	3.54-3.48 / 1.79-1.74	-8.0	1.3	69
		RB40-510		0.8	11.97-12.68 / 5.98-6.42	-15.5	2.4	69
		RB40-510-9		0.8	10.4-11.5 / 5.1-6.1	-15.0	2.4	69
		RB40-610		1.1	13.52-13.97 / 6.7-7.07	-17.0	2.4	69
		RB50-510		1.5	17.7-16.7 / 8.5-8.6	-16.0	3.5	72
三相 Three Δ-Y	200-240	RB10-520	50	0.2	0.81-0.95	-8.5	0.7	50
		RB20-520		0.22	0.76-0.84 / 0.43-0.51	-6.0	0.9	64
	RB30-520	0.38		1.72-2.42 / 1.12-1.59	-8.0	1.3	69	
	RB40-420	0.76		3.51-4.78 / 2.13-3.18	-14.0	2.4	69	
	RB40-420-9	0.76		3.34-4.63 / 2.05-3.16	-13.0	2.4	69	
	RB40-420-F	0.76		2.86-4.51 / 1.6-2.96	-9.0	2.4	69	
	RB40-520	0.9		4-4.66 / 2.4-3.2	-17.0	2.4	69	
	RB40-620	1.1		4.5-5.35 / 2.65-3.6	-18.0	2.4	69	
	RB50-520	1.5		6.72-8.52 / 4.07-5.94	-21.0	3.5	72	
	RB50-520-9	1.5		5.54-8.3 / 3.56-5.93	-13.5	3.5	72	
	RB50-520-F	1.5		5.35-7.8 / 3.56-6.03	-13.0	3.5	72	
	RB50-620	2.2		7.08-8.79 / 4.2-6.06	-22.0	3.5	72	
	RB60-520	2.2		10.1-10.5 / 5.5-6.5	-23.0	5.1	76	
	RB60-520-9	2.2		8-9.4 / 4.6-6	-18.0	5.1	76	
	RB60-620	3		11.1-12.4 / 6.3-8	-25.0	5.1	76	
	RB60-720	4		11.5-12.5 / 6.7-8.1	-27.0	5.1	76	
	200	RB60-3-7NO-F		3.3	9.62	-17.5	5.7	76
	200-240 / 345-416	RB80-4B0		4	17.1-16.3 / 10-9.2	-24.0	8.5	73
		RB80-4B0-Z		4	19.3-17.7 / 10.6-9.7	-24.0	8.5	76
		RB80-5B0		5.5	18.8-19.8 / 10.8-11	-27.0	8.5	73
		RB80-5B0-9		5.5	15.6-17.9 / 8.9-10.1	-25.0	8.5	73
RB80-5B0-Z		5.5	20.1-20.5 / 11.5-11.6	-27.0	8.5	76		
RB80-6B0		7.5	18-26.5 / 11.8-14.9	-30.0	8.5	73		
RB80-6B0-Z	7.5	23.7-28.4 / 13.5-16.1	-32.0	8.5	76			

RB60-598 単相 230V 50Hz もあります。
 CSA 仕様はお問合せください。
 ※騒音測定背景：吐出側、吸込側開放、
 1メートルの距離で測定点4箇所

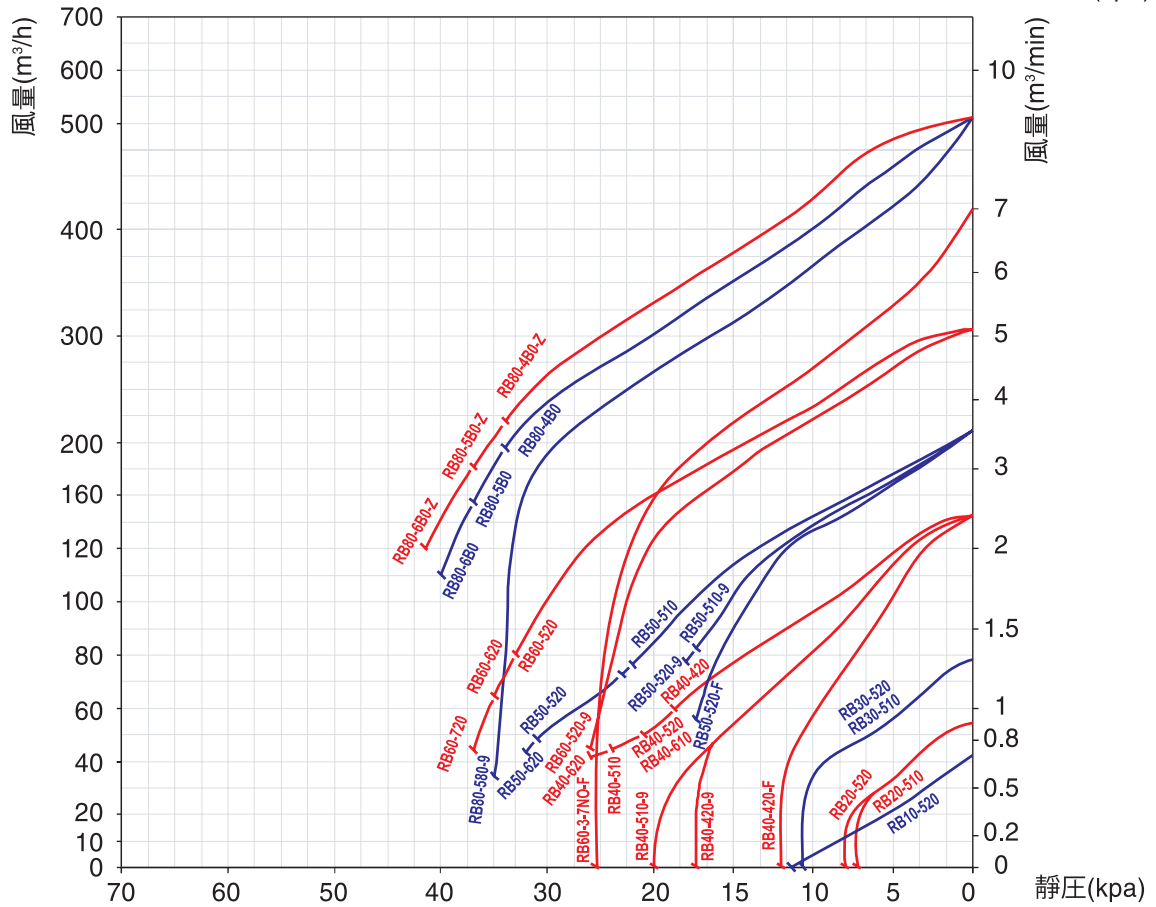
特性図

50Hz

吐出特性



吸込特性



連続運転の限界点は仕様書をご確認ください

Continuous operation permitted

Specification and Operation Diagram

仕様

吐出特性 / (60 Hz) / Blowers with 60 Hz

相 (Phase)	電圧 (Voltage)	型式 (Model)	Hz	定格出力 (kW) Rated Output KW	定格電流 (Amps) Rated Current Amps	最大圧力 (Kpa) Max. Pressure Kpa	最大風量 (m³/min) Max. Airflowm³/min	騒音 dB(A) * Noise Level dB (A)
単相 Single	100-120 / 200-240	RB20-510	60	0.28	3.4-3 / 1.73-1.6	+8.5	1.1	65
		RB30-510		0.42	5.5-4.7 / 2.8-2.36	+11.0	1.6	68
		RB40-510		0.9	16.4-12.8 / 8.2-6.5	+16.0	3	72
		RB40-510-9		0.9	14.6-11.7 / 7.2-5.8	+14.5	3	72
		RB40-610		1.3	17.7-13.9 / 8.7-7	+18.0	3	72
		RB50-510		1.75	22.3-17.3 / 10.7-8.3	+13.0	4.2	73
		RB50-510-9		1.75	22.6-17.7 / 10.6-8.6	+14.0	4.2	73
三相 Three Δ-Y	200-240	RB10-520		0.23	1.0-0.94	+12.0	0.85	51
	200-240 / 380-440	RB20-520		0.28	1.0-0.93 / 0.55-0.53	+8.5	1.1	65
		RB30-520		0.42	1.93-1.93 / 1.08-1.18	+13.0	1.6	68
		RB40-420		0.93	4.1-3.64 / 2.1-2.44	+13.5	3	72
		RB40-420-9		0.93	4.6-4.14 / 2.42-2.4	+17.0	3	72
		RB40-420-F		0.93	3.6-3.47 / 1.95-2.05	+13.5	3	72
		RB40-520		1.15	5-4.45 / 2.63-2.53	+18.0	3	72
		RB40-620	1.5	6.2-5.3 / 3.3-3.1	+23.0	3	72	
		RB50-520	1.75	8.2-7.3 / 4.38-4.27	+20.0	4.2	73	
		RB50-520-9	1.75	7.44-7.03 / 4.07-4.02	+21.0	4.2	73	
		RB50-520-F	1.75	6.87-6.54 / 3.79-3.92	+20.0	4.2	73	
		RB50-620	2.55	10-8.8 / 5.3-4.84	+25.0	4.2	73	
		RB60-520	2.55	11.7-10.3 / 6.4-6	+22.0	6.2	78	
		RB60-520-9	2.55	12.5-11.2 / 6.6-6.1	+25.5	6.2	78	
		RB60-620	3.45	15.7-13.4 / 8-7.4	+27.0	6.2	78	
		RB60-720	4.6	18.7-15.4 / 9.5-8.6	+33.0	6.2	78	
	200	RB60-3-7NO-F	5	15.4-14.2	+26.5	6.8	78	
	208-275 / 380-480	RB80-4B0	4.6	22.8-17.8 / 12.4-10	+23.0	10	79	
		RB80-4B0-Z	4.6	22.5-17.2 / 11.5-9.7	+19.0	10	83	
		RB80-5B0	6.3	26.1-21.8 / 14.1-12.4	+28.0	10	79	
		RB80-5B0-9	6.3	25.1-21.1 / 13.7-12.2	+28.0	10	79	
		RB80-5B0-Z	6.3	28.2-22.5 / 15-12.9	+28.0	10	83	
		RB80-6B0	8.6	36.4-32.6 / 20.5-18.8	+45.0	10	79	
RB80-6B0-Z		8.6	35.8-31.4 / 19.1-18	+38.0	10	83		

吸込特性 / (60 Hz) / Vacuum with 60 Hz

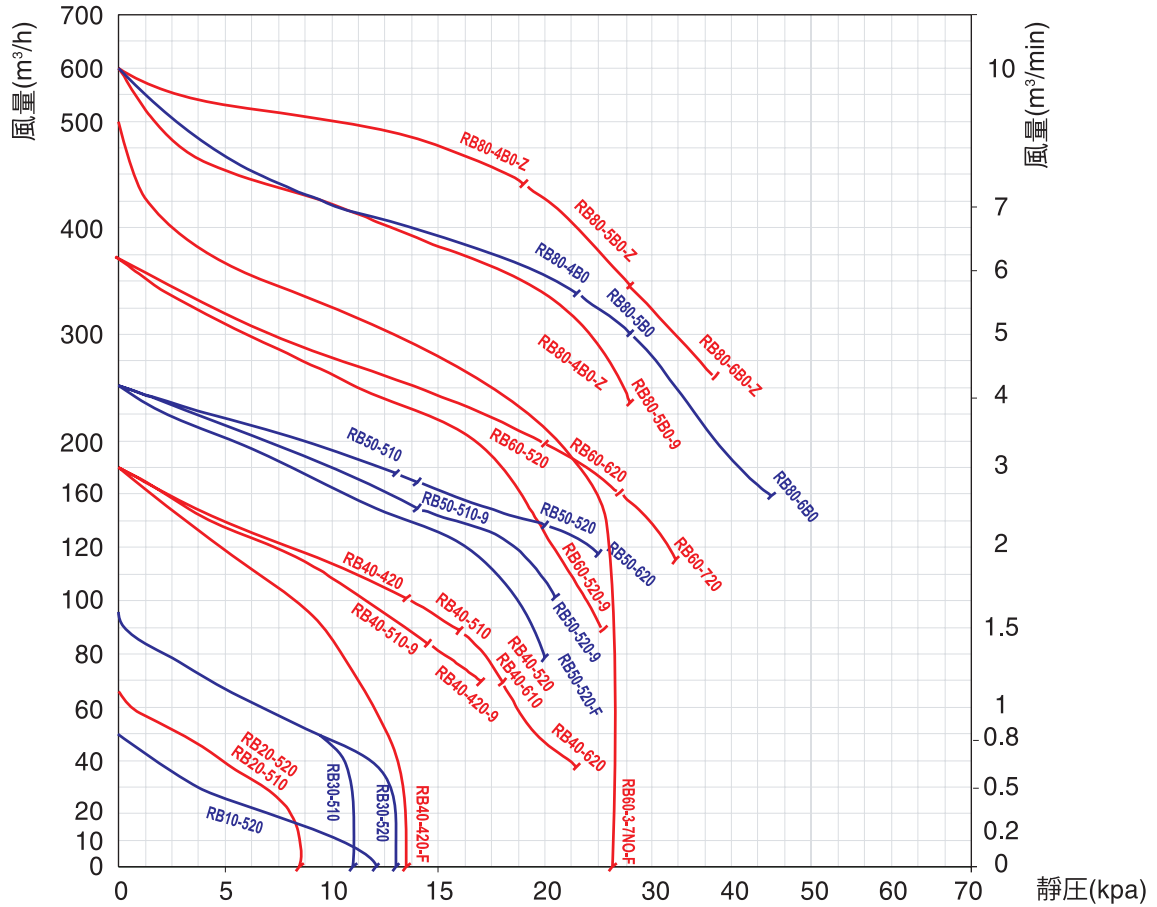
相 (Phase)	電圧 (Voltage)	型式 (Model)	Hz	定格出力 (kW) Rated Output KW	定格電流 (Amps) Rated Current Amps	最大圧力 (Kpa) Max. Pressure Kpa	最大風量 (m³/min) Max. Airflowm³/min	騒音 dB(A) * Noise Level dB (A)
単相 Single	100-120 / 200-240	RB20-510	60	0.28	3.23-2.97 / 1.68-1.58	-7.5	1.1	65
		RB30-510		0.42	5.1-4.34 / 2.58-2.21	-10.0	1.6	68
		RB40-510		0.9	15.81~12.35 / 7.69~6.28	-16.5	3	72
		RB40-510-9		0.9	15.2-12 / 7.1-5.8	-16.0	3	72
		RB40-610		1.3	17.41-13.6 / 8.42-6.84	-18.0	3	72
		RB50-510		1.75	22.4-17.4 / 10.3-8.3	-15.0	4.2	73
		RB50-510-9		1.75	22.1-17.1 / 10.3-8.2	-14.0	4.2	73
三相 Three Δ-Y	200-240	RB10-520		0.23	1.0-0.94	-11.0	0.85	51
	200-240 / 380-440	RB20-520		0.28	1.0-0.9 / 0.53-0.52	-7.5	1.1	65
		RB30-520		0.42	1.83-1.95 / 1.06-1.17	-10.5	1.6	68
		RB40-420		0.93	3.97-3.53 / 2.08-2.11	-13.5	3	72
		RB40-420-9		0.93	4.08-3.9 / 2.24-2.27	-16.5	3	72
		RB40-420-F		0.93	3.41-3.3 / 1.83-1.96	-12.0	3	72
		RB40-520		1.15	4.75-4.31 / 2.61-2.55	-18.0	3	72
		RB40-620	1.5	5.66-5 / 3-2.91	-21.0	3	72	
		RB50-520	1.75	7.4-6.77 / 4-3.99	-20.0	4.2	73	
		RB50-520-9	1.75	6.6-6.14 / 3.62-3.8	-17.5	4.2	73	
		RB50-520-F	1.75	6.27-6.09 / 3.43-3.65	-16.5	4.2	73	
		RB50-620	2.55	8.55-7.7 / 4.6-4.45	-24.0	4.2	73	
		RB60-520	2.55	11.6-9.9 / 6-5.6	-22.0	6.2	78	
		RB60-520-9	2.55	10.5-9.6 / 5.6-5.3	-23.0	6.2	78	
		RB60-620	3.45	13.7-12 / 7.1-6.7	-27.0	6.2	78	
		RB60-720	4.6	15.9-13.3 / 8.2-7.6	-32.0	6.2	78	
	200	RB60-3-7NO-F	5	13.1-11.9	-22.5	6.8	78	
	208-275 / 380-480	RB80-4B0	4.6	22.8-17.6 / 12.5-10.1	-25.0	10	79	
		RB80-4B0-Z	4.6	12.7-12 / 7.1-6.7	-25.0	10	83	
		RB80-5B0	6.3	25.5-21.7 / 13.7-12.3	-31.5	10	79	
		RB80-5B0-9	6.3	22.6-19.7 / 12.6-11.5	-31.0	10	79	
		RB80-5B0-Z	6.3	26.1-21.1 / 13.9-12.2	-28.0	10	83	
		RB80-6B0	8.6	25.3-26 / 14.6-14.3	-35.0	10	79	
RB80-6B0-Z		8.6	29.8-28.6 / 16.2-16.3	-35.0	10	83		

RB60-598 単相 230V 50Hz もあります。
CSA 仕様はお問合せください。
※騒音測定背景: 吐出側、吸込側開放、
1メートルの距離で測定点4箇所

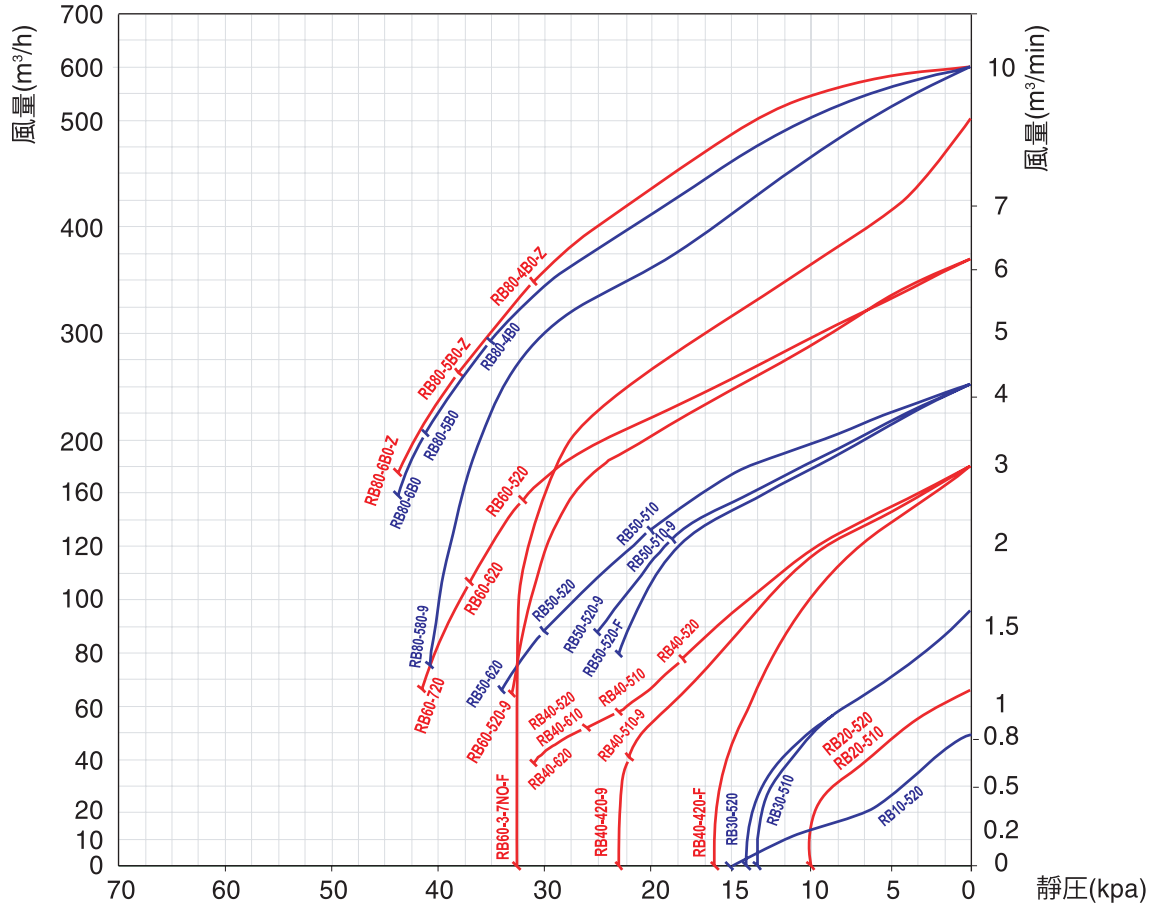
特性図

60Hz

吐出特性



吸込特性



連続運転の限界点は仕様書をご確認ください

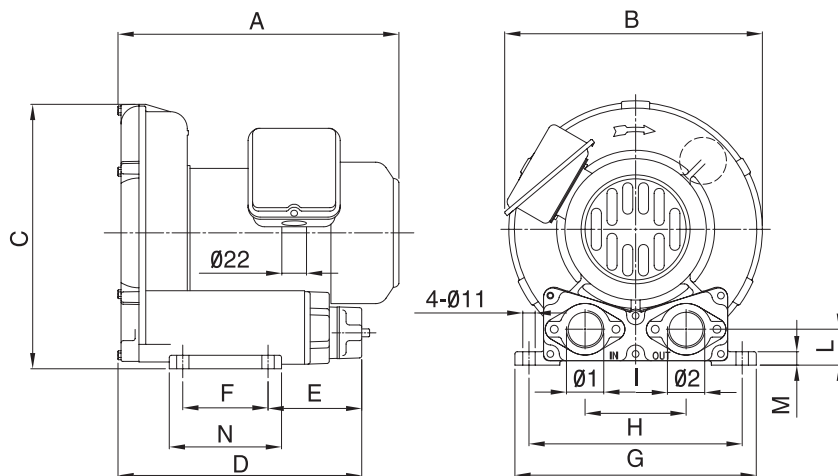
Continuous operation permitted

Specification and Operation Diagram

外形尺寸图

mm

型式 MODEL	A	B	C	D	E	F	G	H	I	J	K	L	M	N	吸込口 ø1	吐出口 ø2	質量 kg
RB20-51*	255	236	238	218	87	76	212	190	90	11	120	34	12	100	G1"	G1"	10.5
RB20-52*	255	236	238	218	87	76	212	190	90	11	120	34	12	100	G1"	G1"	9.8
RB30-51*	256	255	257	262	117	83	230	205	100	11	130	38	12	110	G1 1/4"	G1 1/4"	13.5
RB30-52*	256	255	257	262	117	83	230	205	100	11	130	38	12	110	G1 1/4"	G1 1/4"	13.0

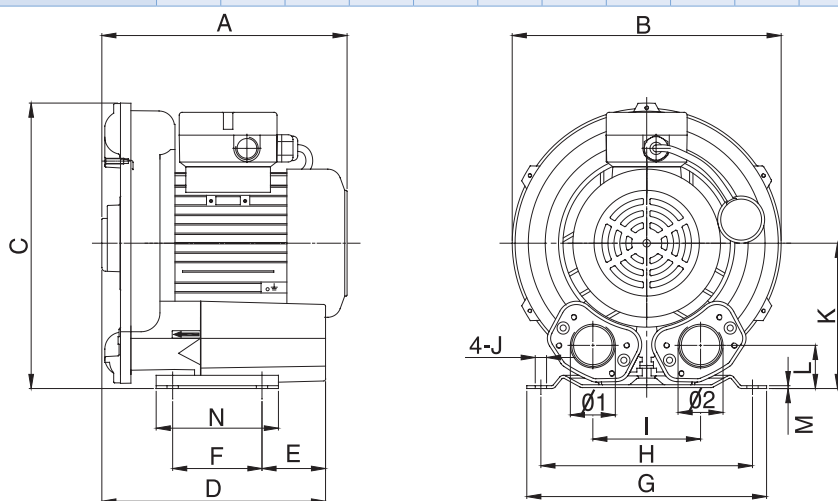


RB20 - ... / RB30 - ...



mm

型式 MODEL	A	B	C	D	E	F	G	H	I	J	K	L	M	N	吸込口 ø1	吐出口 ø2	質量 kg
RB10-52*	205	200	220	174	49	65	196	179	85	8.5	115	40	2	90	G1 1"	G1 1"	6.0
RB40-42*	261	286	303	238	68	95	255	225	115	12	154	46	3	130	G1 1/2"	G1 1/2"	15.3
RB40-42*-9	261	286	303	238	68	95	255	225	115	12	154	46	3	130	G1 1/2"	G1 1/2"	15.3
RB40-42*-F	261	286	303	238	68	95	255	225	115	12	154	46	3	130	G1 1/2"	G1 1/2"	15.3
RB40-51*	261	286	303	238	68	95	255	225	115	12	154	46	3	130	G1 1/2"	G1 1/2"	17.0
RB40-52*	261	286	303	238	68	95	255	225	115	12	154	46	3	130	G1 1/2"	G1 1/2"	16.0
RB40-61*	281	286	303	238	68	95	255	225	115	12	154	46	3	130	G1 1/2"	G1 1/2"	18.2
RB40-62*	261	286	303	238	68	95	255	225	115	12	154	46	3	130	G1 1/2"	G1 1/2"	17.2

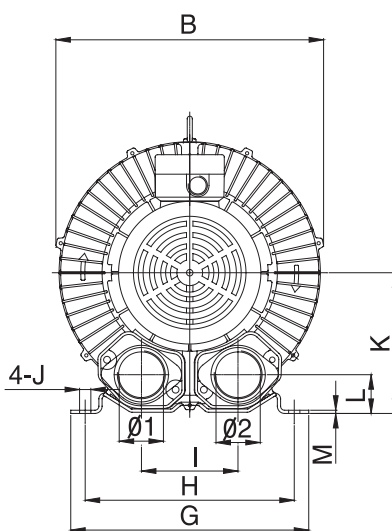
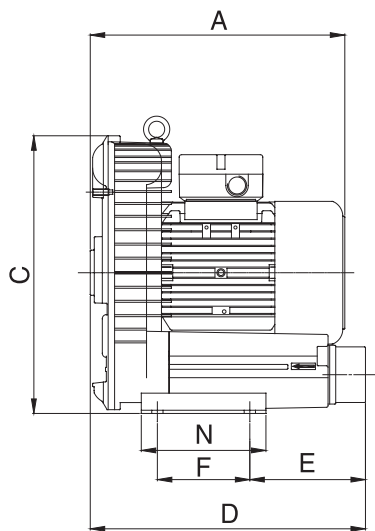


RB40 - ...



外形寸法図

型式 MODEL	A	B	C	D	E	F	G	H	I	J	K	L	M	N	吸込口 ø1	吐出口 ø2	質量 kg
RB50-41*	317	333	345	342	142	115	296	260	120	14	175	48	4	155	G2"	G2"	26.0
RB50-42*	317	333	345	342	142	115	296	260	120	14	175	48	4	155	G2"	G2"	23.0
RB50-51*	317	333	345	342	142	115	296	260	120	14	175	48	4	155	G2"	G2"	26.0
RB50-51*-9	317	333	345	342	142	115	296	260	120	14	175	48	4	155	G2"	G2"	26.0
RB50-52*	317	333	345	342	142	115	296	260	120	14	175	48	4	155	G2"	G2"	23.5
RB50-52*-9	317	333	345	342	142	115	296	260	120	14	175	48	4	155	G2"	G2"	23.5
RB50-52*-F	317	333	345	342	142	115	296	260	120	14	175	48	4	155	G2"	G2"	23.5
RB50-62*	317	333	345	342	142	115	296	260	120	14	175	48	4	155	G2"	G2"	26.0
RB60-52*	364	382	383	380	130	140	325	290	125	15	197	53	4.5	180	G2"	G2"	36.0
RB60-52*-9	364	382	383	380	130	140	325	290	125	15	197	53	4.5	180	G2"	G2"	36.0
RB60-62*	364	382	383	380	130	140	325	290	125	15	197	53	4.5	180	G2"	G2"	37.3
RB60-72*	394	382	383	380	130	140	325	290	125	15	197	53	4.5	180	G2"	G2"	38.4
RB60-3-7N*	402	382	383	388	130	140	325	290	125	15	197	53	4.5	180	G2"	G2"	43.2



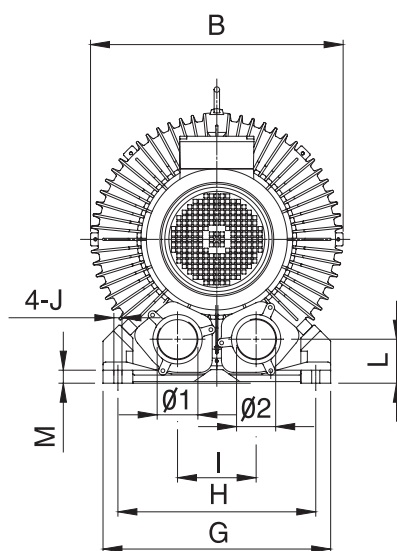
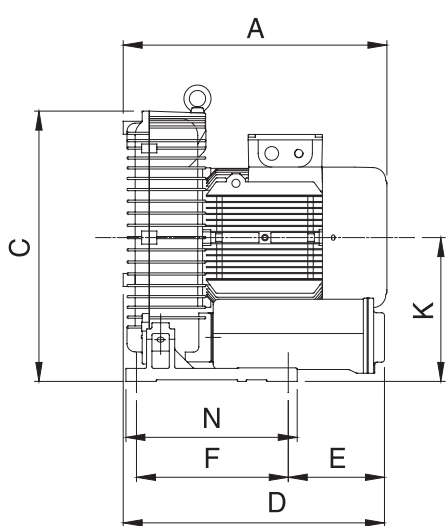
RB50 - ... / RB60 - ...



Optional Accessories

外形寸法図

型式 MODEL	A	B	C	D	E	F	G	H	I	J	K	L	M	N	吸込口 ø1	吐出口 ø2	質量 kg
RB80-4B*	487	466	498	482	178	280	420	365	145	15	265	81	24	316	G2 1/2"	G2 1/2"	117
RB80-5B*	487	466	498	482	178	280	420	365	145	15	265	81	24	316	G2 1/2"	G2 1/2"	120
RB80-5B*-9	487	466	498	482	178	280	420	365	145	15	265	81	24	316	G2 1/2"	G2 1/2"	120
RB80-6B*	487	466	498	482	178	280	420	365	145	15	265	81	24	316	G2 1/2"	G2 1/2"	123
RB80-4B*-Z	482	466	474	468	183	170	394	356	152	15	241	66	6	217	G2 1/2"	G2 1/2"	62
RB80-5B*-Z	482	466	474	468	183	170	394	356	152	15	241	66	6	217	G2 1/2"	G2 1/2"	66
RB80-6B*-Z	482	466	474	468	183	170	394	356	152	15	241	66	6	217	G2 1/2"	G2 1/2"	73



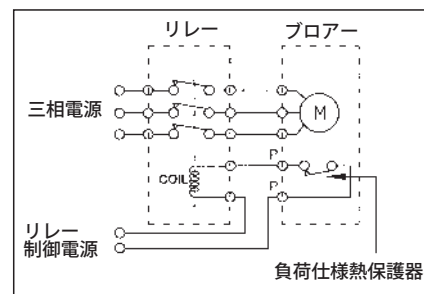
熱保護

熱保護が必要な場合、下記の条件を考慮に入れてください。

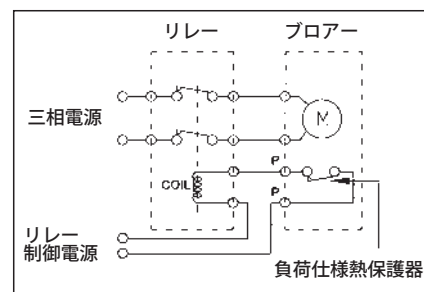
負荷仕様熱保護

- 全 RB-20/RB-30/RB-40/RB50/RB60- シリーズ
- サーマルスイッチは電磁接触器のコイルと直列に接続すること。
- 電磁接触器は、手動でリセットされること。

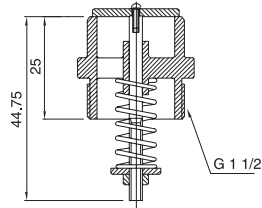
推奨保護器接続 (三相)



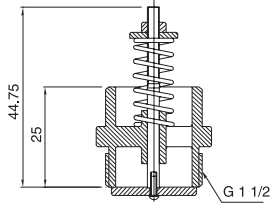
推奨保護器接続 (单相)



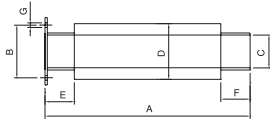
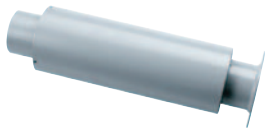
付属品 (オプション)



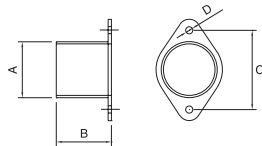
吐出用リリーフ弁 / Pressure relief valve for blowers		
型式 Type	適用機種 Machine	重量 Kg
PR1	For RB40 / RB50 / RB60	0.4



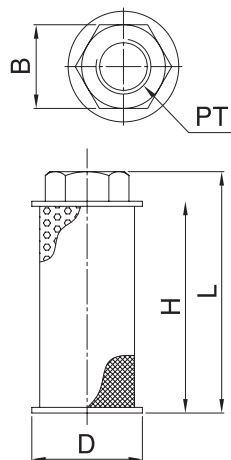
吸引用リリーフ弁 / Vacuum relief valve for suction		
型式 Type	適用機種 Machine	重量 Kg
VR1	For RB40 / RB50 / RB60	0.4



追加消音器 / Additional silencer									
型式 Type	適用機種 Machine	A	B	C	D	E	F	G	重量 Kg
AS 1	RB20-/ 30-	260	55-64	38	60	40	40	6.5	0.85
AS 2	RB40-	280	72	50	76	40	40	6.5	1.01
AS 3	RB50-/ 60-	280	82.5	60	89	40	40	9	1.4



ホースフランジ / Hose Flange						
型式 Type	適用機種 Machine	A	B	C	D	重量 Kg
HF 1	RB20-/ 30-	38.1	50	55-64	6.5	0.17
HF 2	RB40-	50.8	50	72	6.5	0.2
HF 3	RB50-/ 60-	60	50	82.5	9	0.24



単位：mm

エア フィルター / AIR FILTER							
型番	口径	D	L	H	B	流量 (L/min)	重量 (kg)
MF-02	1/4"	58	60	52	22	15	0.09
MF-02-1	1/4"	58	96	90	22	20	0.1
MF-04	1/2"	58	100	90	30	32	0.14
MF-06	3/4"	58	137	124	34	56	0.18
MF-08	1"	58	170	155	42	110	0.2
MF-10	1 1/4"	71	186	170	54	210	0.35
MF-12	1 1/2"	85	196	182	65	285	0.49
MF-16	2"	103	215	202	75	395	0.65

型式説明

ホーシンプローアー / REGENERATIVE / SIDE CHANNEL RING BLOWERS

製品コード Product Code **RB 40 -- 5 2 0 F**

ブローアサイズ Blower Size
Number: 10, 20, 30, 40, 50, 60, 80

出力コード Output Specification
Number: 4, 5, 6, 7

電圧コード Voltage Specification

単相：
1=100-120/200-240V 50/60 Hz,
9=108-127/208-254V 50/60 Hz
108-120/216-240V 50/60 Hz cCSAus

三相：
2=200-240/380-440V 50/60 Hz
3=208-240/416-480V 50/60 Hz cCSAus
B=200-240/345-416V 50Hz, 208-275/380-480V 60Hz

型式コード Type Index

0= 海外向け Standard Type
U= 北米向け cCSAus Type
1=120℃サーマル付け Temperature control switch
2=140℃サーマル付け Temperature control switch
3=125℃サーマル付け Temperature control switch

F= 日本国内仕様
9= 高圧力対応
X= 特殊仕様

The Catalogue only for reference, without notice if specification changed. / このカタログに掲載した内容は、予告なく変更することがありますのでご了承ください。

標準梱包サイズ / Standard Packing

型式 MODEL	単品 / サンプル			推奨数量 / SUGGESTED ORDER		
	包装単位	寸法 (cm)	重量 (Kgs)	梱包単位	寸法 (cm)	重量 (Kgs)
RB10-	1pc/wooden case	30.5x27.0x28.0	6	60pcs/pallet	93x111x152	371
RB20-	1pc/wooden case	30.5x27.0x28.0	12	60pcs/pallet	93x111x152	731
RB30-	1pc/wooden case	37.0x36.0x35.5	15	36pcs/pallet	113x111x154	552
RB40-	1pc/wooden case	38.0x36.5x39.0	20	24pcs/pallet	79x111x168	490
RB50-	1pc/wooden case	42.5x40.5x42.0	29	24pcs/pallet	88x124x180	696
RB60-	1pc/wooden case	47.0x47.0x50.5	44	18pcs/pallet	96x144x164	806
RB80-	1pc/wooden case	80.0x62.0x70.0	123	1pcs/pallet	80x62x70	123

Selection Guide

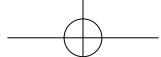
單位換算對照表

	mbar(hPa)	Kpa	kgf/cm²	mmH₂O	Torr(mmHg)	lb/in²(psi)
1 mbar(hPa)	1	0.1	1.02x10 ⁻³	10.197	0.75	1.45x10 ⁻²
1 Kpa	10	1	1.02x10 ⁻²	100.197	7.50	0.145
1 kgf/cm ²	9.807x10 ²	98.07	1	10 ⁴	7.356x10 ²	14.22
1 mmH ₂ O	9.807x10 ⁻²	9.807x10 ⁻³	10 ⁻⁴	1	7.354x10 ⁻²	1.42x10 ⁻³
1 Torr(mmHg)	1.333	0.1333	1.36x10 ⁻³	13.59	1	1.934x10 ⁻⁵
1 lb/in ² (psi)	68.95	6.895	7.03x10 ⁻²	7.03x10 ²	51.71	1

	mbar(hPa)	bar	Pa(N/m²)	mmAq	in.Hg	in.H₂O
1 mbar(hPa)	1	10 ⁻³	10 ²	10.197	2.953x10 ⁻²	0.402
1 bar	10 ³	1	10 ⁵	100.197	29.53	4.015x10 ²
1 Pa(N/m ²)	0.01	10 ⁻⁵	1	10 ⁴	2.953x10 ⁻⁴	4.015x10 ⁻³
1 mmAq	9.807x10 ⁻²	9.807x10 ⁻⁵	9.807	1	2.896x10 ⁻³	3.394x10 ⁻²
1 in.Hg	33.86	3.386x10 ⁻²	3.386x10 ³	13.59	1	13.6
1 in.H ₂ O	2.491	2.49x10 ⁻³	2.49x10 ²	7.03x10 ²	7.356x10 ⁻²	1

	m³/h	m³min	m³/s	L/min	cfm/(ft³/min)
1 m ³ /h	1	1.667x10 ⁻²	2.778x10 ⁻⁴	16.67	0.588
1 m ³ min	60	1	1.667x10 ⁻²	10 ³	35.28
1 m ³ /s	3600	60	1	6x10 ⁴	2.117x10 ³
1 L/min	6x10 ⁻²	10 ⁻³	1.667x10 ⁻⁵	1	3.528x10 ⁻²
1 cfm/(ft ³ /min)	1.699	2.832x10 ⁻²	4.72x10 ⁻⁴	28.32	1

Conversion Chart



H.S.Machinery Co., Ltd.

賀欣機械廠股份有限公司

台湾新北市樹林區中正路 632 巷 5 号

TEL: +886-2-2689-3663 FAX: +886-2-26896600

Email: timwang@hohsing.com.tw

— 国内総販売元 —

CAT-05-001 印製日期 2011.10

Φ 株式会社 十力マニ

本 社	東京都千代田区外神田 2-15-5	
東京営業所	東京都文京区湯島 3-9-3	TEL 03-3833-1601
札幌営業所	札幌市白石区本通り 3 丁目北 4-15	TEL 011-862-6210
埼玉営業所	埼玉県所沢市東所沢 2-36-7	TEL 04-2946-3091
名古屋営業所	愛知県小牧市外堀 2-248	TEL 0568-73-3113
大阪営業所	大阪市淀川区西中島 4-9-32	TEL 06-6305-2601
京都出張所	京都市南区唐橋西平垣町 35	TEL 075-682-5856
広島営業所	広島市東区光町 1-4-25	TEL 082-263-9535
福岡営業所	福岡市南区鶴田 1-6-1	TEL 092-565-0501

